

# Mukilteo Sign Inventory Project

Final Presentation

December 2 | Autumn 2024



# Contents

Our Team	3
Project Context	4
Field Work	7
Case Studies	15
Analysis	22
Work Cited	26



# Our Team



**William**

wkhadivi@uw.edu



**Eva**

ejdlp@uw.ed  
u



**Victor**

vlomholt@uw.edu



**Frannie**

fmyers@uw.edu



**Thomas**

tnguye9@uw.edu



**Max**



# Project Context

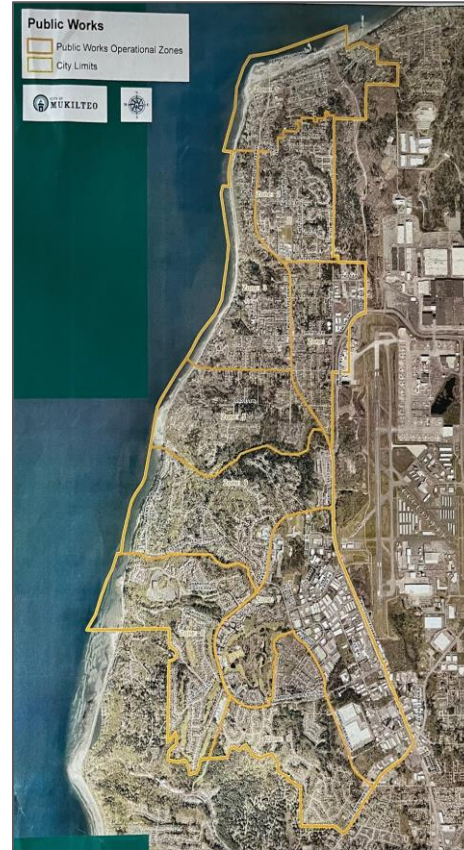
# Updating Mukilteo's Database

- **Problem identified by client:** Outdated and incomplete database of signs.
- The condition of Mukilteo signs has not been recently or consistently updated to the ArcGIS system.
  - Difficult to track state of signs, including updates and damage, or to determine if a sign has been removed or destroyed.

# Site Area

- Mukilteo City Limits
- Divided into 9 operational zones
- Inventory of city-owned signage
  - **Mapping priority:**  
Begin with Southern zones and move upwards

5 Miles



Map 1: Zone map, provided by City of Mukilteo.



Map 2: ArcGIS Sign Inventory Field Map.

A teal-colored rounded rectangular box with a white double-line border is centered on a light grey background. The text "Field Work" is written in white, bold, sans-serif font inside the box. On the left and right sides of the box, there are grey lines that appear to be part of a larger graphic element, possibly representing a ribbon or a path. The lines on the left and right are slightly angled, suggesting they might be part of a larger diagram or flowchart.

**Field Work**

# Training | *In-person at Mukilteo Public works department*

Briefed on both mapping platforms

Issued equipment for field work (Safety vests and iPads)

- Later issued measuring equipment (tape measures & Rangefinders)

Brought into field for sign mapping activity

Zones 1-5 determined to be recently mapped





# Mapping platforms used



## ArcGIS Field Maps

- Inventory system
  - Passive, can be edited and viewed
- Lists all inventoried city-owned signs in the Mukilteo area



## City of Mukilteo

- AKA FixIt Mobile App
- For “Fix it” reports
- More direct method of communication
- “Admin” Status for prioritized reports

Mapping tools were accessible from both City-issued iPads and personal cellular devices.

# Team Preparations and Challenges:


- Conducted field visits split into teams of 2-3 for maximum efficiency and to accommodate team availability.
- Visit lengths were often **2-4 hours**
  - Cellular battery could be an issue
- Some weather delays during fieldwork
- Manual entries of undocumented signs
  - Additional time required, specifically on documenting uncommon/unknown to us signage



Cancel Collect Submit

Other Regulatory - Pedestrian cr...  
47.878792°N 122.286247°W

Take Photo Attach



Sign Type \*  
Other Regulatory

Inspection Date  
October 26, 2024

Inspector Name  
UW CEP 460 Student

Mount Height (in to bottom)  
44

Reflective Sheeting?  
Yes

# ArcGIS field interface

Signs on the platform had not been updated for 5+ years



## Street Sign

12617 54th Ave W, Mukilteo WA 98275,  
United States

## Description

Displayed publicly

## What type of sign?

[Select an answer.](#)

Not displayed publicly

## What is the problem?

[Select an answer.](#)

Not displayed publicly

[Cancel Report](#)



Home



Notices



New Request



Requests



Profile

# FixIt App

Any issue with signage is reported here  
(missing, damaged, outdated)

# Completed Work

**Updated zones: 6, 7, 8, 9**

**Fix It Tickets: ~ 25 work orders**

## **Lessons Learned:**

Importance of planning and documentation of field studies and team coordination.

Need for consistent data entry practices and recordkeeping.



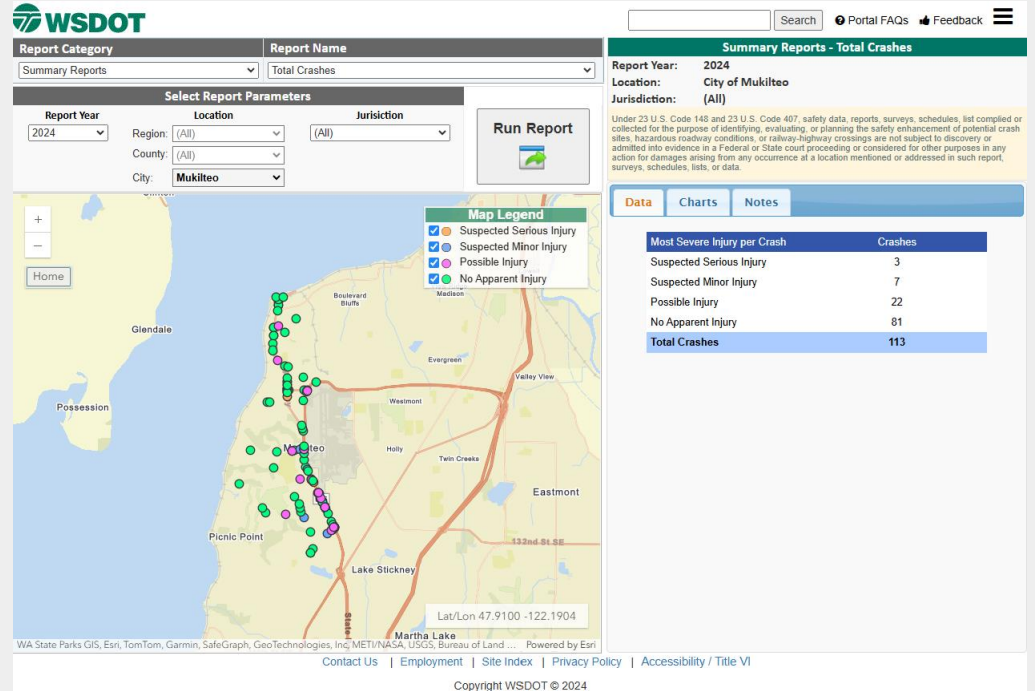
**Case Studies**

# Mukilteo Traffic Safety Data

In the past ten years, there are no recorded traffic fatalities in Mukilteo!

(Washington Traffic Safety Commission)

Most crashes are centered around the Speedway.



## Mukilteo Speedway

- 45,000 vehicles per day northbound
  - Recorded at Beverly Park Road
- 5.2 miles (Ferry to city limit)
- 114 reported crashes in 2023



## Aurora Avenue

- 58,000 vehicles per day northbound
  - Recorded at Roy St & Aurora
- 5.0 miles (N 145th St to N 46th St)
- 145 reported crashes in 2023





# Making Mukilteo Speedway Safer

- Comparable to Aurora Ave through Seattle (both are highways)
- Balance needed between through traffic and intercity traffic
- **Proposed solutions:**
  - Add more concrete barriers / curbs
  - Add more signalized crosswalks for pedestrian safety
  - Reduce speed limits
  - Safety beyond signage



*Aurora Reimagined Coalition*



*City of Mukilteo*

# Community Identity Signs

San Diego, CA

**Solution:** Signs as a public expression of a place's identity

**Recommendations:** Identification of 1-3 additional landmark sites in Mukilteo and the development of an RFP and public commentary process for sign development on these proposed sites.



Current Mukilteo welcome sign



# Traffic Calming

## Seattle, WA

**Solution:** Adding physical barrier that encourages drivers to slow down and be aware of their surroundings.

**Recommendations:** Identify high collisions locations and propose traffic calming strategies to reduce speeds and collisions



Source(s) City of Seattle



Source(s) City of Seattle



Source(s) City of Seattle

# Neighborhood Yard Sign Program

Redmond, WA

**Solution:** City's Traffic and Pedestrian Safety Program providing two signs per household to residents who request them via the "Report an Issue" tool

**Recommendations:** City to design neighborhood safe driving sign templates for Mukilteo residents to request via an online portal.





**Analysis**

# Conditions Assessment:

## Findings:

Each sign took roughly **2 minutes** to complete.

Many of the signs that had previously been flagged for repairs in the original field map had been replaced/cleaned without updates to the database.

## **Concentrations of outdated parking signs on residential streets**

- Example: 47th Pl. West off Beverly Park Rd.

**Main issue** was lack of documentation for added signs or removed signs rather than signs in need of repair

# Future Recommendations:

## **For the City of Mukilteo:**

Add new signs to database when they are installed.

For **greater efficiency** in the field, skip sign measurement for previously documented and unharmed signs

**Progress map** – overlay with ARCGis to better determine recently updated zones

# Thank you!

## Questions?

fmyers@uw.edu

vlomholt@uw.edu

wkhadivi@uw.edu

ejdlp@uw.edu  
u

tnguye9@uw.edu





# Works Cited

“Crash Data Portal.” WSDOT. Accessed December 1, 2024.

<https://remoteapps.wsdot.wa.gov/highwaysafety/collision/data/portal/public/>.

“Traffic Calming - Transportation | Seattle.gov.” n.d. *City of Seattle*, <https://www.seattle.gov/transportation/projects-and-programs/programs/home-zone-program/traffic-calming>.

# Rubric

## Rubric:

### Slide Submission (3 points)

- Slides uploaded on time
- Slides consistently and clearly formatted
- Slides include a logical organization or structure
- Slides are spell-checked and data and illustrations are cited

### Preparation + Research (3 points)

- Work is placed in professional and/or academic context of the relevant topics
- Work is situated within the recent project developments and larger history of the community

### Analysis + Recommendations (3 points)

- The team has presented case studies or other research and drawn effective comparisons to the project work
- The team has presented any unique data collected or tools created to help the client use this material going forward
- The team makes clear and succinct recommendations for the client

### Presentation Materials (3 points)

- Illustrations are used effectively and cited (when not original)
- Data is presented clearly in tables, charts, or diagrams
- Slides are not overly wordy, but convey key findings

### Presentation Delivery + Style (3 points)

- Speakers' clarity in delivering points
- Explaining concepts rather than reading data or slides